

## Two new species of *Duolandrevus* from Sumatra (Orthoptera: Gryllidae: Landrevinae)

A.V. Gorochov

Gorochov, A.V. 2003. Two new species of *Duolandrevus* from Sumatra (Orthoptera: Gryllidae: Landrevinae). *Zoosystematica Rossica*, **12**(1): 48.

Two new species of the genus *Duolandrevus* Kirby (with unclear subgeneric position) from Sumatra are characterized by the structure of the male tegmina, male anal plate, and the male genitalia.

A.V. Gorochov, Zoological Institute, Russian Academy of Sciences, Universitetskaya nab. 1, St.Petersburg 199034, Russia.

### *Duolandrevus aequatorialis* sp. n.

*Holotype*. ♂, **Indonesia**, *Sumatra*, *prov. West Sumatra*, 20 km E of Sasak, env. of National Park Harau Valley, 600 m, equator, primary forest, 24-26.XI. 1999, A. Gorochov (Zoological Institute, St.Petersburg).

*Paratypes*. 2 ♂, with same data as in holotype.

*Description*. *Male*. Coloration light brown with brown epicranium, mandibles, anteclypeus, pronotum, lateral and apical areas of tegmina, distal part of hind femora, dorsal and apical parts of abdomen. Structure as in *D. rufus* Chop., but size slightly smaller, tegmina with chords more strongly curved and mirror lacking crossveins or their traces (Fig. 1), anal plate with characteristic distal part (Figs 2-4), and genitalia as in Figs 5-7.

*Female* unknown.

Length (mm). Body 19-20; pronotum 2.9-3.1; tegmina 8.7-9.3; hind femora 11.8-12.5.

*Holotype*. ♂, **Indonesia**, *Sumatra*, *prov. Jambi*, 35 km N of Sungaipenuh, National Park Kerinci-Seblat, Kerinci Mt., 1500-2000 m, primary forest, 18-22.XI. 1999, A. Gorochov (Zoological Institute, St.Petersburg).

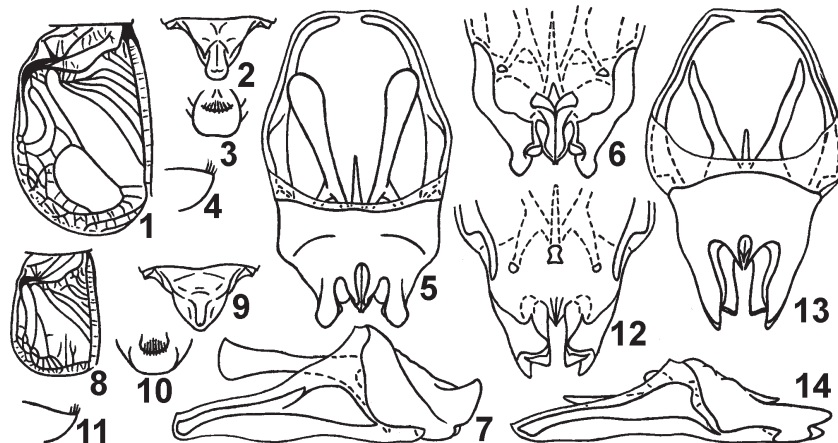
*Description*. *Male*. Similar to *D. aequatorialis*, but genae yellowish behind eyes, pronotum dark brown, tegmina brown with light brown middle part, abdomen dark brown with yellowish narrow stripe along hind edge of tergites 2-7. Structure different from that of all congeners in short tegmina without mirror and with partly reduced chords (Fig. 8), inner tympanum rather small and outer one very small, anal plate and genitalia as in Figs 9-14.

*Female* unknown.

Length (mm). Body 20; pronotum 3.3; tegmina 5.4; hind femora 12.3.

Received 2 August 2003

### *Duolandrevus praestans* sp. n.



**Figs 1-14.** *Duolandrevus* Kirby, male. 1-7, *D. aequatorialis* sp. n. (holotype); 8-14, *D. praestans* sp. n. Dorsal part of tegmen (1, 8); anal plate (2, 4, 9, 11) and its apex (3, 10) from above (2, 9), from behind (3, 10), and from side (4, 11); genitalia (5, 7, 13, 14) and their distal part (6, 12) from above (5, 13), from below (6, 12), and from side (7, 14).