

A new subgenus of *Duolandrevus* for a new species from Sumatra (Orthoptera: Gryllidae: Landrevinae)

A.V. Gorochov

Gorochov, A.V. 2003. A new subgenus of *Duolandrevus* for a new species from Sumatra (Orthoptera: Gryllidae: Landrevinae). *Zoosystematica Rossica*, **11**(2), 2002: 356.

Surdolandrevus subgen. n. with a single new species is described from Sumatra. This subgenus is characterized by the stridulatory apparatus reduced and the tympana lost.

A.V. Gorochov, Zoological Institute, Russian Academy of Sciences, Universitetskaya nab. 1, St.Petersburg 199034, Russia.

Subgenus ***Surdolandrevus*** subgen. n.

Type species: *Duolandrevus surdus* sp. n.

Diagnosis. This subgenus differs from all other congeners in head rather high (hardly higher than wide), tegmina smaller and with reduced stridulatory apparatus (Fig. 1), legs short (fore femora distinctly shorter than head width) and without tympana. Male anal plate similar to that of subgenus *Bejoramia* Otte (Figs 3, 4); male genitalia typical of genus *Duolandrevus* Kirby (Figs 5-7).

Included species. Only type species.

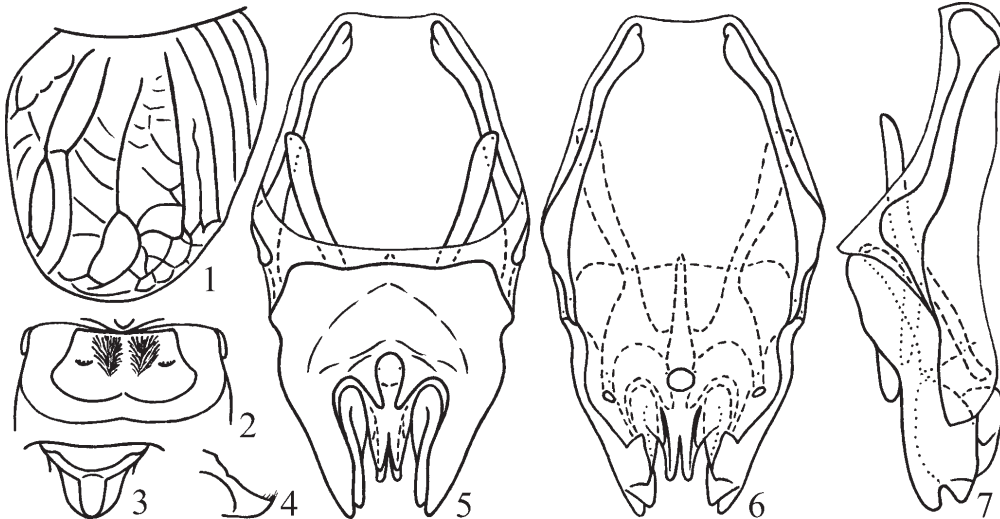
Duolandrevus (Surdolandrevus) surdus sp. n.
(Figs 1-7)

Holotype. ♂, **Indonesia**, Sumatra, prov. Jambi, 35 km N of Sungaipenuh, National park Kerinci-Seblat, Mt. Kerinci, 1500-2000 m, 18-22.XI.1999, A. Gorochov (Zoological Institute, St.Petersburg).

Description. Male. Body rather small and not depressed dorsoventrally. Coloration brown with dark brown fore part of head, large spots behind eyes, proximal halves of mandibles, and a pair of spots on pronotal disc, light brown labrum, scapes, spots on genae and anterior half of lower part of pronotal lateral lobes, fore and middle legs, hind femora excepting their apical parts, a pair of rows of spots on dorsal part of pterothorax and abdomen, yellowish palpi, postclypeus, pleurites, ventral part of thorax, and single longitudinal vein along lateral edge of dorsal part of both tegmina. Rostrum between antennal cavities hardly wider than scapes, slightly angular. Pronotum typical of this genus (distinctly transverse). Tegmina extending to hind part of 1st abdominal tergite; their venation as in Fig. 1; hind wings absent. Metanotal gland as in Fig. 2. Anal plate with dorsal longitudinal cavity and apical bundle of setae (Figs 3, 4); genitalia as in Figs 5-7.

Female unknown.

Length (mm). Body 15; pronotum 2.7, tegmina 3, hind femora 9; hind tibiae 5.5.



Figs 1-6. *Duolandrevus surdus* sp. n., male. 1, right tegmen; 2, metanotal gland; 3, anal plate from above; 4, its apex from side; 5-7, genitalia from above (5), from below (6), and from side (7).