

A new species of *Cratomelus* from Chile (Orthoptera: Anostostomatidae: Cratomelinae)

A.V. Gorochov

Gorochov, A.V. 2000. A new species of *Cratomelus* from Chile (Orthoptera: Anostostomatidae: Cratomelinae). *Zoosystematica Rossica*, 8(2), 1999: 242.

Cratomelus meritus sp. n. (Chile) distinctly differs from other congeners in the characteristic structure of the male abdominal apex.

A.V. Gorochov, Zoological Institute, Russian Academy of Sciences, Universitetskaya nab. 1, St. Petersburg 199034, Russia.

Cratomelus meritus sp. n.

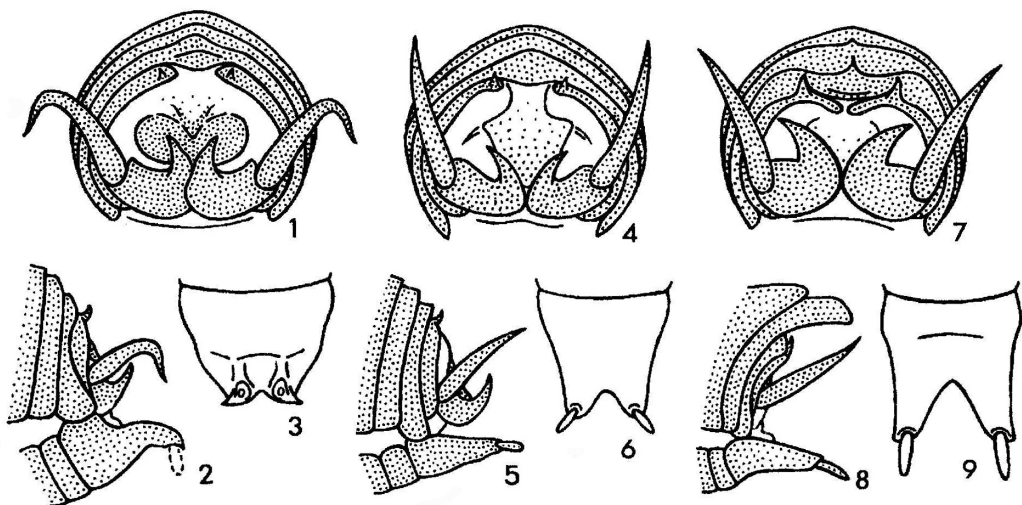
Holotype. ♂, Chile, "Varas Avangua" (Zoological Institute, St. Petersburg).

Description. Male (holotype). General appearance as in two other congeners. Coloration reddish brown, darkish. Venation of wings typical of this genus; tegmina extending to apex of 1st abdominal tergite and slightly overlapping. Abdominal tergites: 7th and 8th with small hind median notch (without any processes), 9th with small hind median lobe, 10th divided by rather wide membranous median area and with rather small hooks; paraprocts (Figs 1, 2) characteristic; genital plate (Fig. 3) short, with small hind median notch and acute paired apical projections (styles missing).
Female unknown.

Length (mm). Body 32; pronotum 9; tegmina 6; hind femora 18; hind tibiae 16.

Comparison. *C. meritus* differs from *C. integer* And. (Figs 4-6) in the larger tegmina (in *C. integer*, they extend to the base of 1st abdominal tergite and do not contact each other), more robust male paraproctal hooks, and the shape of the male genital plate, from *C. armatus* Blanch. (= *Stenopelmatus chilensis* Sauss., *Lencica ferruginea* Walk., *C. valdivia* Grab., *C. monticellii* Salfi, *C. productus* And.) (Figs 7-9) in the absence of any processes on 7th and 8th male abdominal tergites and the shape of the 9th and 10th abdominal tergites, paraproctal hooks, and genital plate of male.

Received 8 July 1999



Figs 1-9. *Cratomelus*, ♂. 1-3, *C. meritus* sp. n.; 4-6, *C. integer* And. (holotype); 7-9, *C. armatus* Blanch. Abdominal apex from behind (1, 4, 7) and from side (2, 5, 8); genital plate from below (3, 6, 9).